

Wheeler Theater

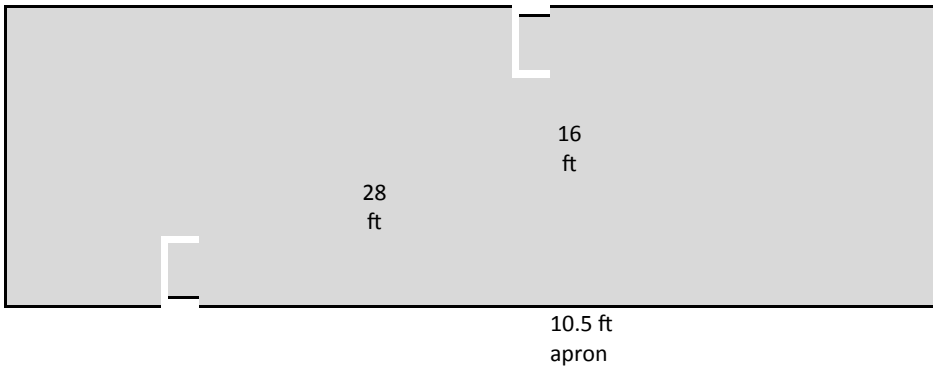


Maximum Occupancy:

260

(*Additional seating available)

JOSEPH WHEELER
THEATER



Suitable for:

- * Lectures
- * Film screenings
- * Wedding ceremonies
 - * Rehearsals
 - * Performances

Notes:

Historic theater equipped with box office, outdoor marquee lighting, sloped seating, house lights, & working lights. ADA

accessible,

projection screen, podium, & backstage area for special "behind the scenes" needs. Extra charges for additional lighting, tech work, & heating.

moveable
chairs

| | | | | | | | | | | |
|---|---|---|---|---|---|---|---|---|---|----|
| A | 1 | 2 | 3 | 4 | 5 | 6 | 7 | 8 | 9 | 10 |
| B | 1 | 2 | 3 | 4 | 5 | 6 | 7 | 8 | 9 | 10 |
| C | 1 | 2 | 3 | 4 | 5 | 6 | 7 | 8 | 9 | 10 |
| D | 1 | 2 | 3 | 4 | 5 | 6 | 7 | 8 | 9 | 10 |
| E | 1 | 2 | 3 | 4 | 5 | 6 | 7 | 8 | 9 | 10 |
| F | 1 | 2 | 3 | 4 | 5 | 6 | 7 | 8 | 9 | 10 |
| G | 1 | 2 | 3 | 4 | 5 | 6 | 7 | 8 | 9 | 10 |
| H | 1 | 2 | 3 | 4 | 5 | 6 | 7 | 8 | 9 | 10 |
| J | 1 | 2 | 3 | 4 | 5 | 6 | 7 | 8 | 9 | 10 |
| K | 1 | 2 | 3 | 4 | 5 | 6 | 7 | 8 | 9 | 10 |
| L | 1 | 2 | 3 | 4 | 5 | 6 | 7 | 8 | 9 | 10 |
| M | 1 | 2 | 3 | 4 | 5 | 6 | 7 | 8 | 9 | 10 |
| N | 1 | 2 | 3 | 4 | 5 | 6 | 7 | 8 | 9 | 10 |
| O | 1 | 2 | 3 | 4 | 5 | 6 | 7 | 8 | 9 | 10 |

moveable
chairs

moveable
chairs

| | | | | | | | | | | | |
|---|----|----|----|----|----|----|----|----|----|----|---|
| A | 11 | 12 | 13 | 14 | 15 | 16 | 17 | 18 | 19 | 20 | A |
| B | 11 | 12 | 13 | 14 | 15 | 16 | 17 | 18 | 19 | 20 | B |
| C | 11 | 12 | 13 | 14 | 15 | 16 | 17 | 18 | 19 | 20 | C |
| D | 11 | 12 | 13 | 14 | 15 | 16 | 17 | 18 | 19 | 20 | D |
| E | 11 | 12 | 13 | 14 | 15 | 16 | 17 | 18 | 19 | 20 | E |
| F | 11 | 12 | 13 | 14 | 15 | 16 | 17 | 18 | 19 | 20 | F |
| G | 11 | 12 | 13 | 14 | 15 | 16 | 17 | 18 | 19 | 20 | G |
| H | 11 | 12 | 13 | 14 | 15 | 16 | 17 | 18 | 19 | 20 | H |
| J | 11 | 12 | 13 | 14 | 15 | 16 | 17 | 18 | 19 | 20 | J |
| K | 11 | 12 | 13 | 14 | 15 | 16 | 17 | 18 | 19 | 20 | K |
| L | 11 | 12 | 13 | 14 | 15 | 16 | 17 | 18 | 19 | 20 | L |
| M | 11 | 12 | 13 | 14 | 15 | 16 | 17 | 18 | 19 | 20 | M |
| N | 11 | 12 | 13 | 14 | 15 | 16 | 17 | 18 | 19 | 20 | N |
| O | 11 | 12 | 13 | 14 | 15 | 16 | 17 | 18 | 19 | 20 | O |

moveable
chairs

(may be used by
sound table)