

# Seminar Room



*Fort Worden*

— PORT TOWNSEND —

A HISTORIC GATHERING PLACE

Maximum Capacity:

45

Suitable for:

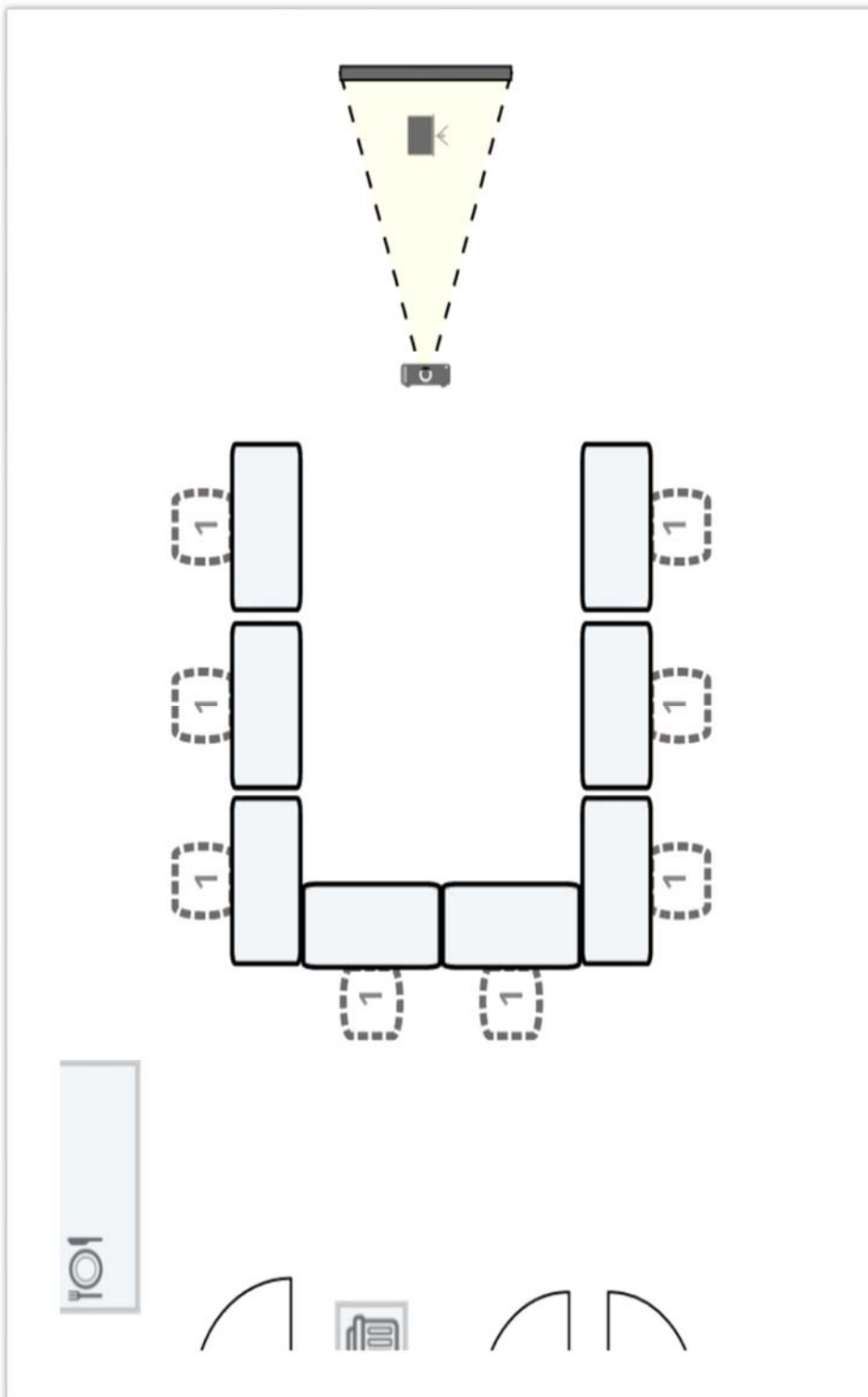
- \* Meetings
- \* Presentations
- \* Workshops
- \* Lectures

Notes:

The perfect gathering place for your small group, includes a blackboard, projections screen, podium, darkening shades, & carpeting.

Example Room Setup:

U—Shaped



# JFK

# Building



*Fort Worden*

— PORT TOWNSEND —

A HISTORIC GATHERING PLACE

Maximum Capacity:

180

Suitable for:

- \* Lectures
- \* Workshops
- \* Receptions
- \* Film screenings
- \* Dance studio

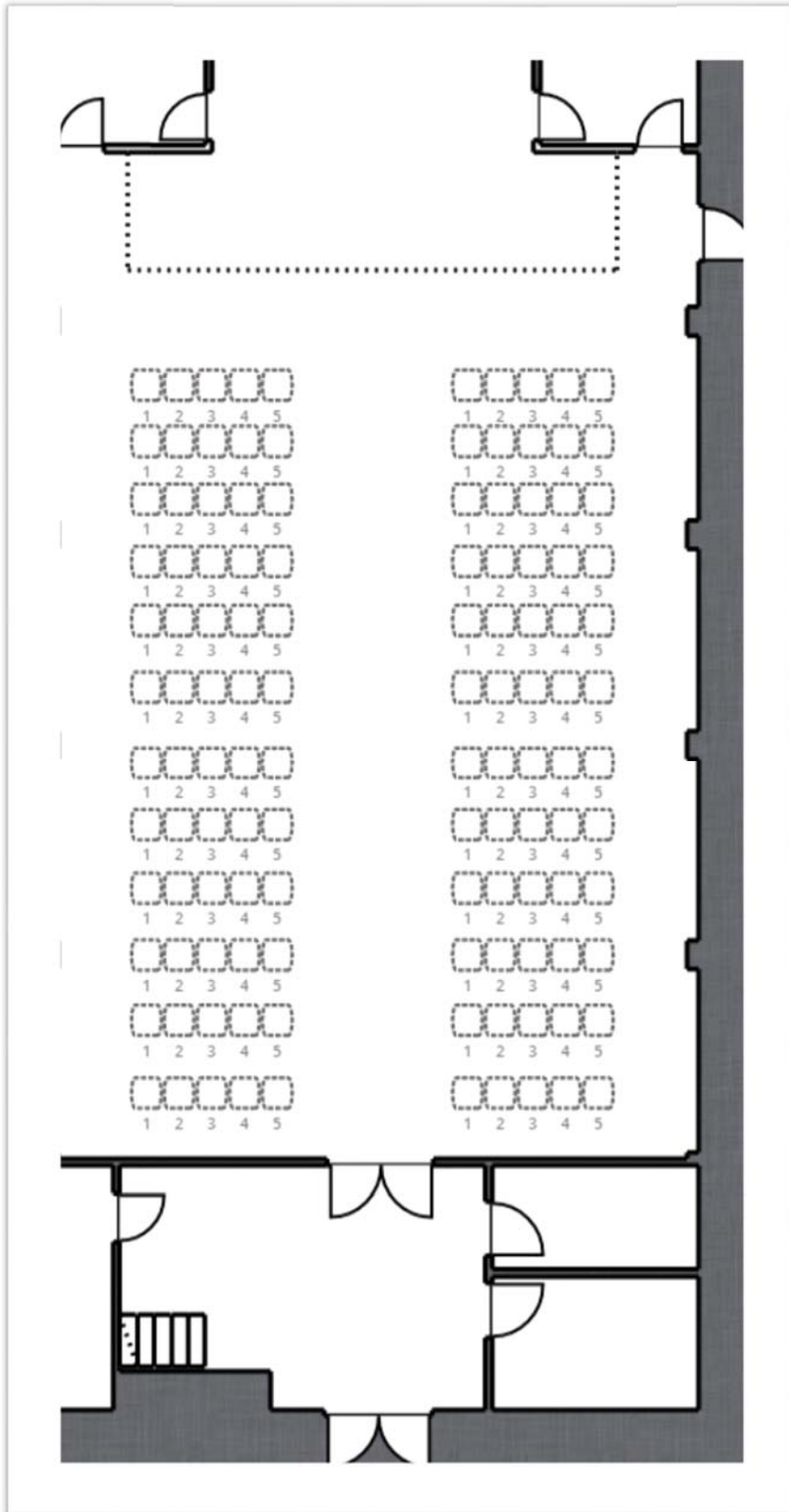
Notes:

JFK Hall building is newly remodeled and ideal for large groups.

There is a built-in projection screen & a stage.

Example Room Setup:

Theater Seating



# The Chapel



*Fort Worden*

— PORT TOWNSEND —

A HISTORIC GATHERING PLACE

Maximum Capacity:

160

Suitable for:

- \* Weddings
- \* Lectures
- \* Workshops
- \* Film screenings
- \* Family reunions

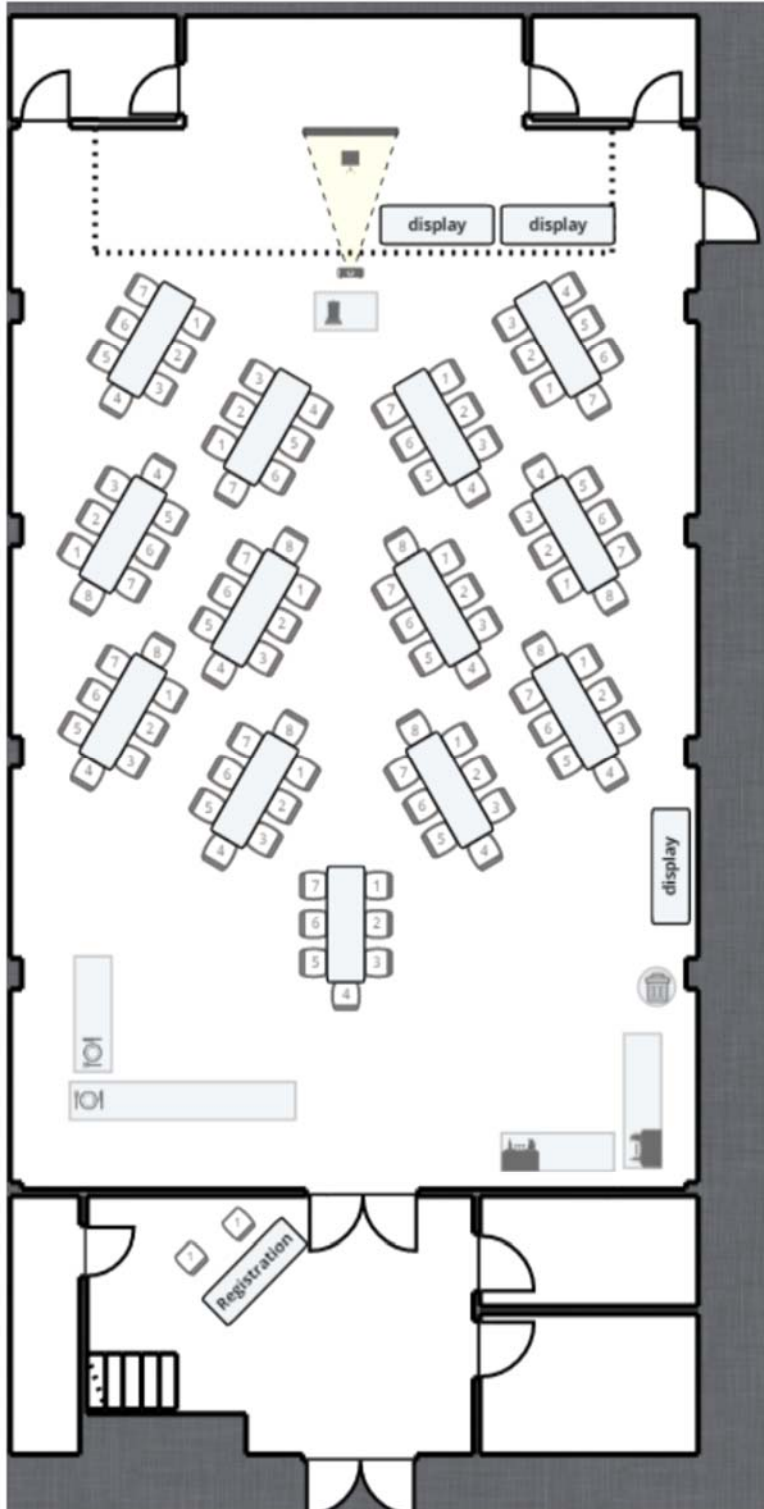
Notes:

Wood floors, carpeted entry, and platform stage. There is a built in screen, a stage, & room-darkening shades.

Example Room

Setup:

Herringbone



# Wheeler Theater

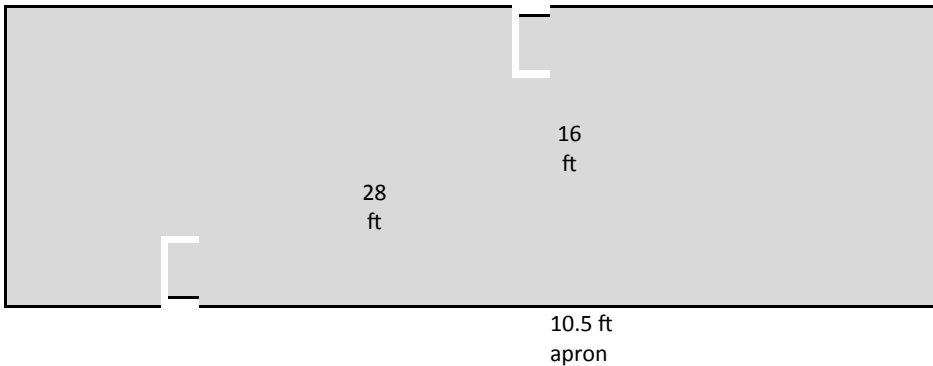


Maximum Occupancy:

260

(\*Additional seating available)

JOSEPH WHEELER  
THEATER



Suitable for:

- \* Lectures
- \* Film screenings
- \* Wedding ceremonies
- \* Rehearsals
- \* Performances

Notes:

Historic theater equipped with box office, outdoor marquee lighting, sloped seating, house lights, & working lights. ADA accessible, projection screen, podium, & backstage area for special "behind the scenes" needs. Extra charges for additional lighting, tech work, & heating.

moveable  
chairs

A	1	2	3	4	5	6	7	8	9	10
B	1	2	3	4	5	6	7	8	9	10
C	1	2	3	4	5	6	7	8	9	10
D	1	2	3	4	5	6	7	8	9	10
E	1	2	3	4	5	6	7	8	9	10
F	1	2	3	4	5	6	7	8	9	10
G	1	2	3	4	5	6	7	8	9	10
H	1	2	3	4	5	6	7	8	9	10
J	1	2	3	4	5	6	7	8	9	10
K	1	2	3	4	5	6	7	8	9	10
L	1	2	3	4	5	6	7	8	9	10
M	1	2	3	4	5	6	7	8	9	10
N	1	2	3	4	5	6	7	8	9	10
O	1	2	3	4	5	6	7	8	9	10

moveable  
chairs

moveable  
chairs

A	11	12	13	14	15	16	17	18	19	20	A
B	11	12	13	14	15	16	17	18	19	20	B
C	11	12	13	14	15	16	17	18	19	20	C
D	11	12	13	14	15	16	17	18	19	20	D
E	11	12	13	14	15	16	17	18	19	20	E
F	11	12	13	14	15	16	17	18	19	20	F
G	11	12	13	14	15	16	17	18	19	20	G
H	11	12	13	14	15	16	17	18	19	20	H
J	11	12	13	14	15	16	17	18	19	20	J
K	11	12	13	14	15	16	17	18	19	20	K
L	11	12	13	14	15	16	17	18	19	20	L
M	11	12	13	14	15	16	17	18	19	20	M
N	11	12	13	14	15	16	17	18	19	20	N
O	11	12	13	14	15	16	17	18	19	20	O

moveable  
chairs

( may be used by  
sound table)

# Building 204



## Maximum Occupancy:

204 US or 204 UN – 150

204 DN – 150

204 DS – 12-60

204 Suite – 600

## Suitable for:

Meetings

Classes

Lectures

Workshops

Presentations

## Notes:

Building 204 has 4 wings available individually or rented as a whole venue. Flexible meeting arrangements abound with the two upper wings being big, open spaces, and the two bottom wings being smaller, individualized rooms great for break -out workshops or smaller meetings. This building is ADA accessible with an elevator for the upper floors.

# Fort Worden Commons

## Maximum Capacity:

Commons A—250

Commons B or C—100

Grand Ballroom Suite—700

## Suitable for:

- \* Galas
- \* Auctions
- \* Trade Shows
- \* Luncheons
- \* Receptions
- \* Conferences

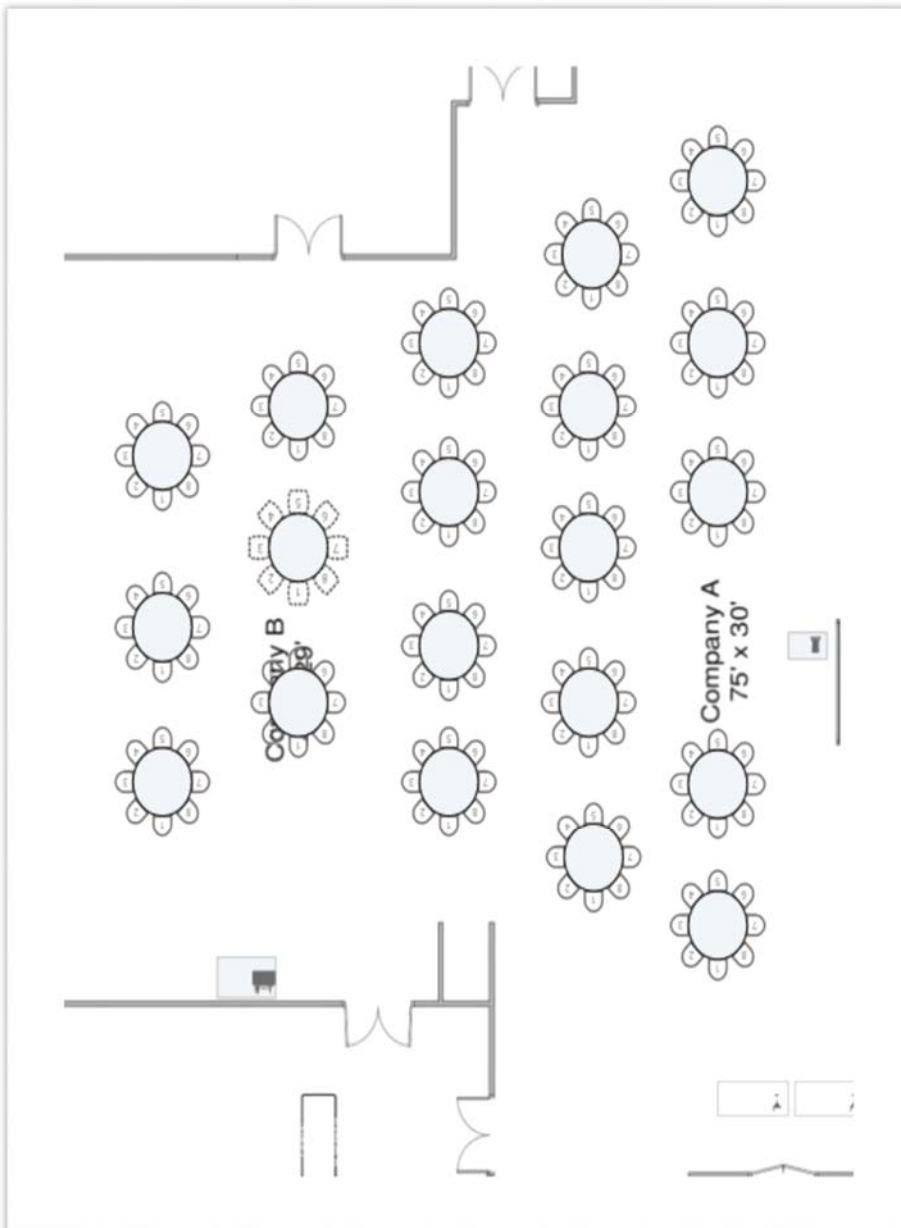
## Notes:

A multi-use facility with four potential meeting halls ranging in capacity. You may choose a combination of rooms or use them individually.

## Example Room Setup:

Luncheon

\*Whole Commons space too large to picture, please contact the Sales Department for a tour.



*Fort Worden*

— PORT TOWNSEND —

A HISTORIC GATHERING PLACE

# McCurdy Pavilion



*Fort Worden*  
— PORT TOWNSEND —  
A HISTORIC GATHERING PLACE

## Maximum Occupancy:

850-900 auditorium seating

\*additional seating available upon request\*

## Suitable for:

- \* Graduations
- \* Rehearsals
- \* Performances
- \* Fashion Shows
- \* Concerts

## Notes:

ADA accessible, propane heat, and only available for rent during May through September. Large stage, outdoor lighting/bathrooms, parking across the street, and backstage access for special “behind the scenes” needs.

AV & lighting can be rented out through Centrum. PDA is trained on how to unlock/open doors—civilians will not attempt on their own.



# USO Building



*Fort Worden*  
 — PORT TOWNSEND —  
 A HISTORIC GATHERING PLACE

Maximum Capacity:

200

Suitable for:

- \* Weddings
- \* Performances
- \* Banquets
- \* Meetings
- \* Trade Shows

Notes:

With a big, open dance floor, raised stage, podium, projection screen, and a smaller, carpeted area for a buffet, this space is perfect for large gatherings.

Example Room

Setup:

Family Style

